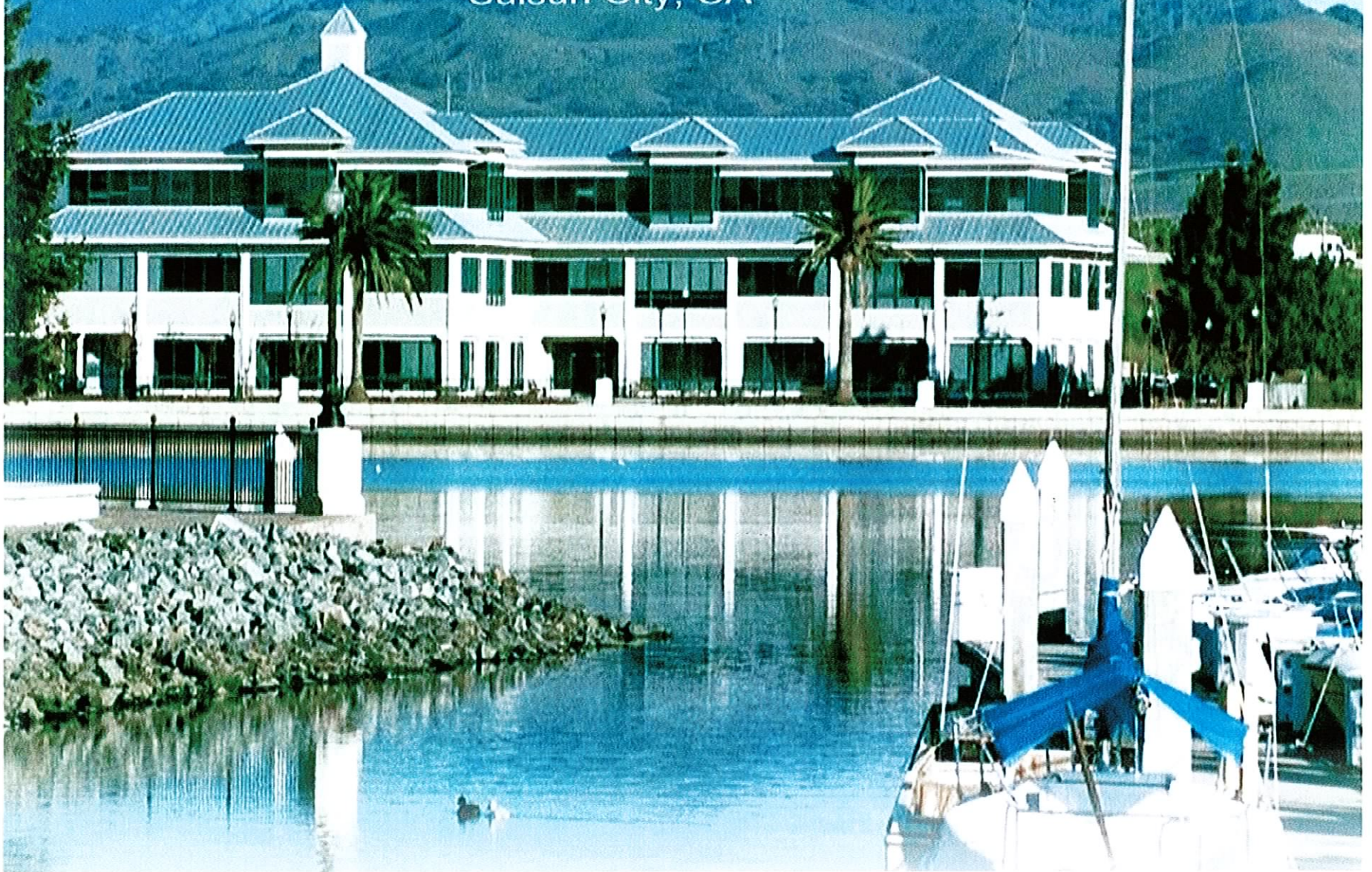


One Harbor Center
Suisun City, CA



One Harbor Center

THE PERFECT BLEND OF AESTHETICS AND TECHNOLOGY

Throughout One Harbor Center, functional design and new millennium technology are combined with unique elements of pedestrian orientation to create a luxury office environment – one that meets the needs of professional businesses, your employees and your clients.

Located on the Suisun City waterfront, this 125,000 square

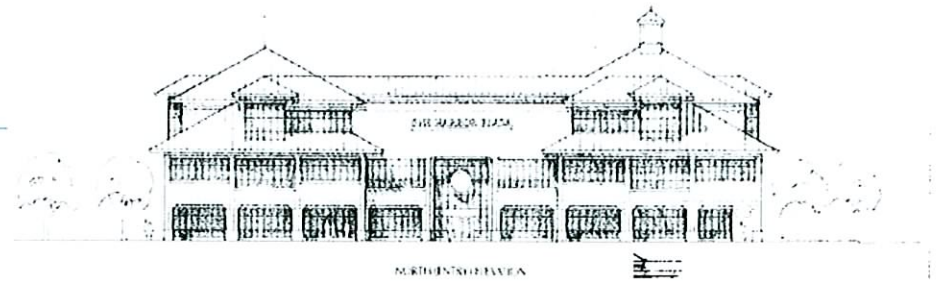
foot luxury office complex includes two Class A professional buildings. These three-story, landmark structures with professionally landscaped grounds and pedestrian courtyards offer an inviting, pleasant environment for working or quiet relaxation.

Considering the ambience of the waterfront and the quality of the buildings, it is difficult to imagine a more desirable working environment.

BUILDING FEATURES AND LOCAL AMENITIES

- ◆ High visibility, prestige image
- ◆ Breathtaking views of the Harbor, the Delta and Mt. Diablo
- ◆ Professionally landscaped grounds
- ◆ Outdoor courtyard plaza
- ◆ Central location with immediate access to Highways 80 and 12
- ◆ Abundant and convenient landscaped parking areas
- ◆ Wide variety of convenient shops and restaurants
- ◆ Frequent commuter train stops at the Amtrak station directly across the street

“ . . . the most desirable working environment in Solano County . . . ”



ARCHITECTURAL FEATURES AND BUILDING SYSTEMS

- ◆ Spacious atrium lobby with elegant stone floors
- ◆ Ceramic tiled men's and women's restroom on each floor
- ◆ Steel frame construction
- ◆ Minimal interior columns
- ◆ Generous finish allowance to permit custom space design
- ◆ Flexible design to allow expansion within and between floors
- ◆ Numerous corner offices
- ◆ Tinted glass windows
- ◆ State of the art energy management system to insure maximum climate control and optimal operating efficiencies
- ◆ Automatic sprinkler water flow and smoke detection systems
- ◆ Two elevators serving all floors
- ◆ Excellent security including controlled, after hours keyless access
- ◆ Modern, high speed data and communication connectivity



THE WISEMAN COMPANY LLC



THE WISEMAN COMPANY LLC

BROKERAGE DEVELOPMENT INVESTMENT MANAGEMENT

One Harbor Center
Suisun City, CA 94585
707.427.1212
Kirk Hull, Leasing Broker

ABOUT THE WISEMAN COMPANY...

Founded in 1979, The Wiseman Company has become Solano County's leading full service commercial real estate firm. Recognizing the demand for superior quality professional offices, we developed the first Class A office building in 1989. Today, the firm and its affiliates own, manage and lease the preferred, multi-tenant office buildings in Solano County.

Our business and professional tenants range from NYSE companies to local entrepreneurs. Their one common requirement is a professionally managed, clean, efficient office which provides the optimum environment for employees and clients.

"As structural and civil engineers, we have worked with The Wiseman Company for over 10 years. In 1995, we sold our building and leased offices in Martin Plaza. The quality of these offices is superb, the managers are very responsive

and we are pleased with our decision."

Tad Tobitt, Senior Vice President
Creegan & D'Angelo, Engineers

The Wiseman Company is the only locally owned, full service commercial real estate firm which can offer these types of buildings. The few other Class A buildings are managed and owned by out-of-town companies.

"United Airlines' 24 hour tele-reservation operation in 333 Sunset demands round-the-clock systems dependability. Our 160 member team congratulates The Wiseman Company staff and we are extremely pleased with the quality of service and attention to detail."

Leigh Walters, Regional Manager
United Airlines

We lease, operate and maintain our own buildings. Our office is here, our personnel live here and designated individuals are on call 24 hours a day, seven days a week. In addition, we employ the best landscape, elevator,

HVAC and janitorial contractors to insure that building systems operate smoothly and that the premises are pristine. Day Porter and after hours security are some of the services we have introduced to this suburban market.

"Our Napa and Solano County law firm selected Corporate Plaza because of its image and location. Our employees and clients enjoy and are impressed by the quality of this building, and we appreciate the constant presence of Wiseman Company representatives, attending to all of the details."

David Gaw, Senior Partner
Gaw, Van Male, Smith, Myers and Miroglio

By choosing a building operated by The Wiseman Company, you will join these successful businesses at Solano County's most desirable addresses and you will enjoy the quality of service and accommodations that your business deserves.