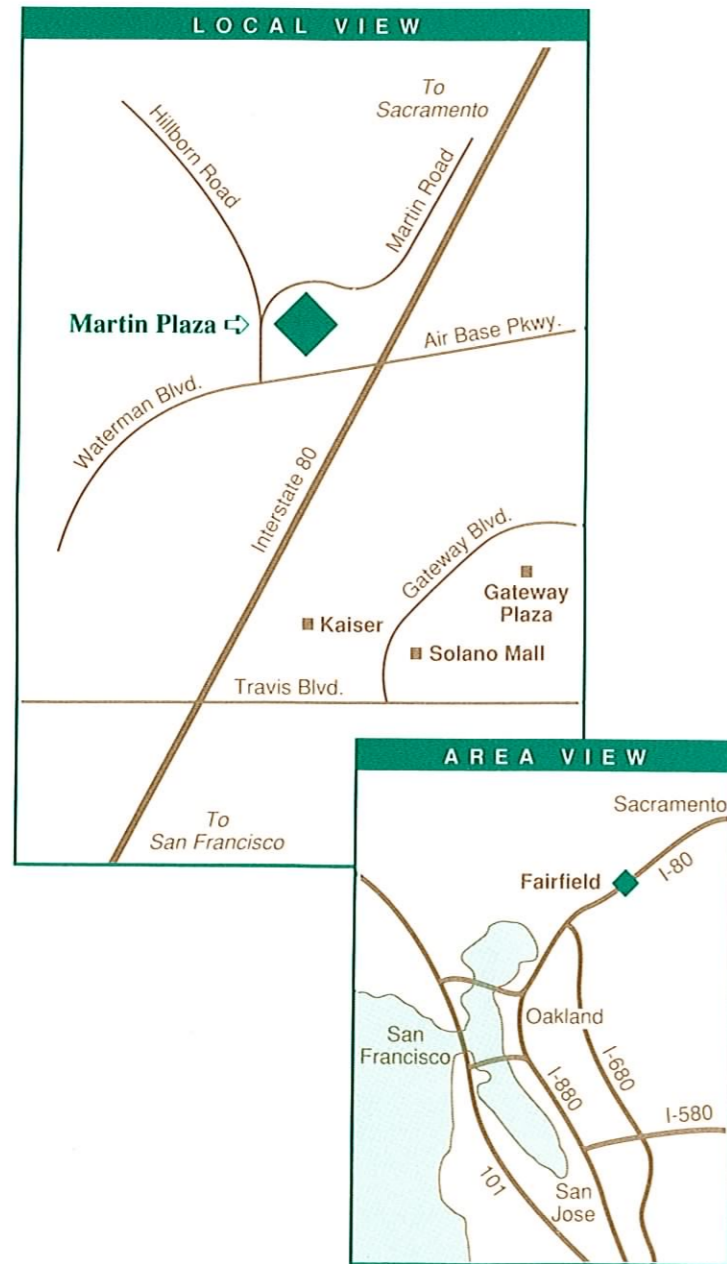
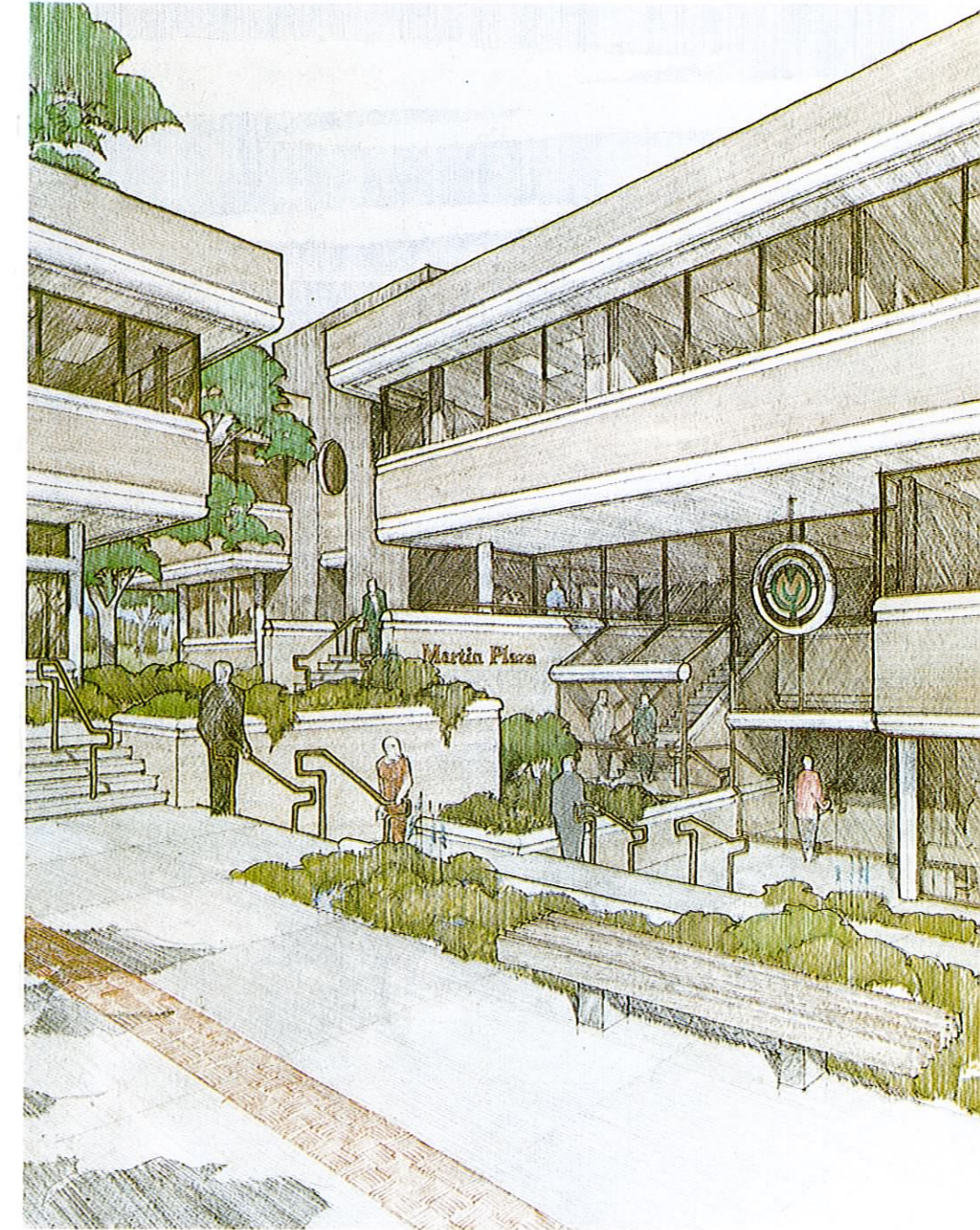


Martin Plaza is located in the heart of Solano County in the city of Fairfield. Halfway between San Francisco and Sacramento, Martin Plaza provides you with easy access to major Bay Area markets, vendors, customers and an abundant labor pool.

You're centrally located, minutes from the University of California, Davis, a short drive to the beautiful Napa Valley or a quick trip north to Lake Tahoe.



Martin Plaza



*The following is a list of previous projects
The Wiseman Company
has developed:*

Corporate Plaza

*1261 Travis Boulevard
Fairfield, California*

333 Sunset

*333 Sunset Avenue
Suisun City, California*

Vacaville Medical Center

*1001 Nut Tree Road
Vacaville, California*

Fairfield Professional Center

*740 Texas Street
Fairfield, California*

*2420 Martin Road
Fairfield, California*

Martin Plaza commands attention from more than 100,000 people each day, as they travel the Interstate 80 corridor, which links the Bay Area with the Sacramento Valley. Positioned immediately adjacent to the freeway, access to and from Martin Plaza is quick and easy.

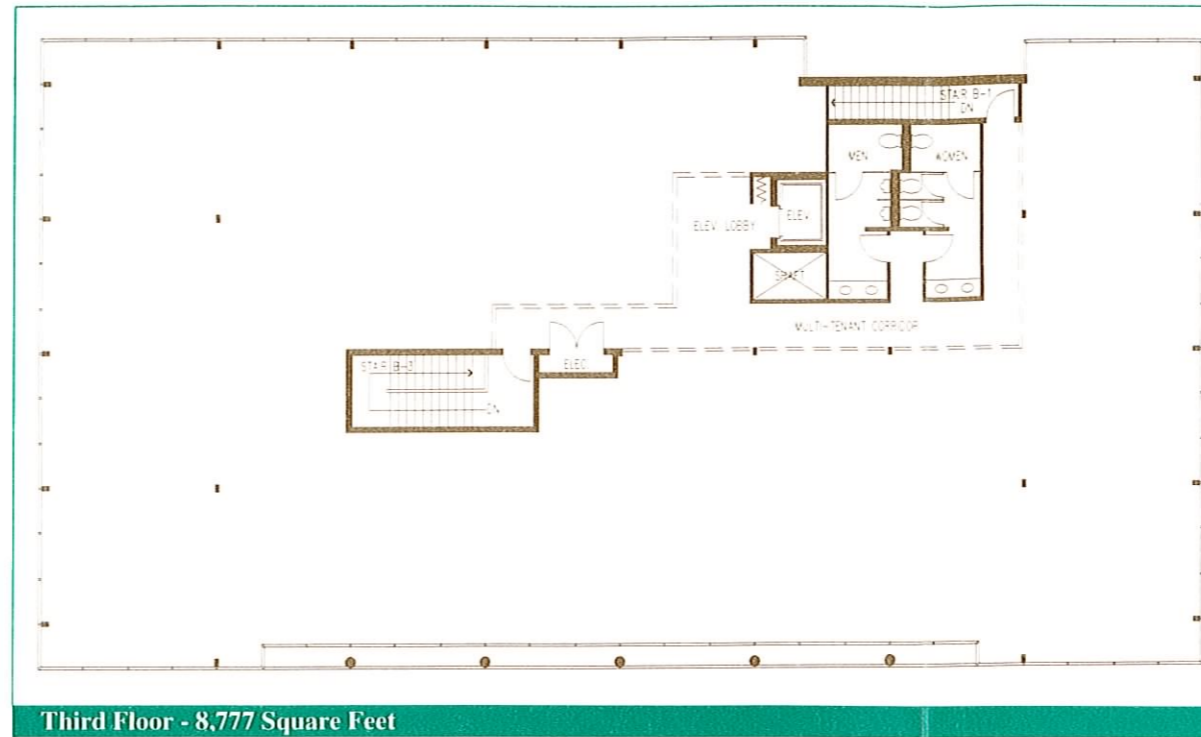
Located in the heart of Solano County, Martin Plaza is conveniently close to thriving retail centers, medical offices, financial institutions, business centers, child care and Travis Air Force Base.

Positioned on a hill, Martin Plaza boasts a panoramic view of the Solano hills, distant mountain ranges, nearby delta and the tranquil valley.

Martin Plaza's unique architectural design includes expansive glass, a spacious lobby and elegant stone floors. Energy efficient amenities such as double pane windows and an advanced energy management system insure maximum climate control and optimal operating efficiencies.

Situated on two acres of prime real estate, Martin Plaza includes two, Class A, steel frame professional office buildings totaling 35,250 square feet.

Linking the two buildings is an outdoor courtyard plaza and professionally landscaped grounds which provide an enjoyable and relaxing area for employees and clients.

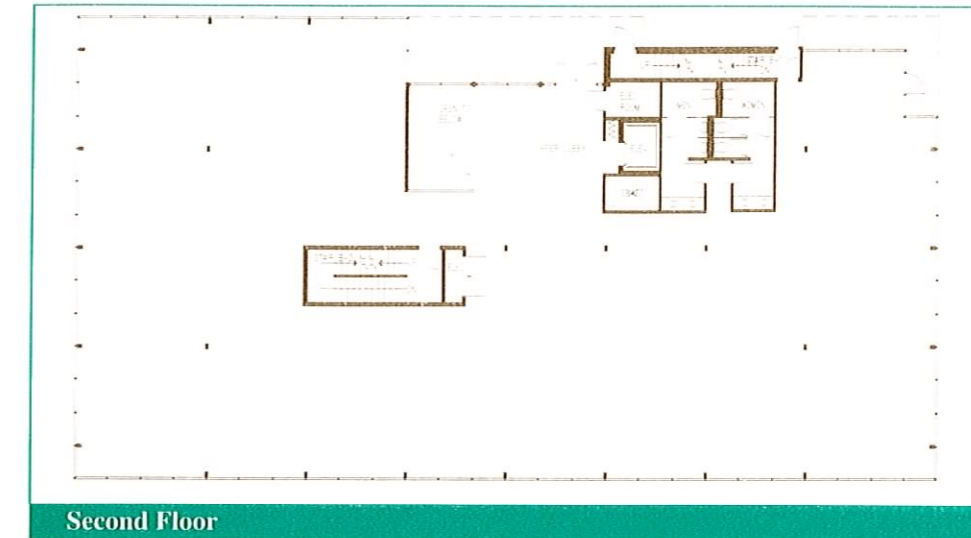


Third Floor - 8,777 Square Feet

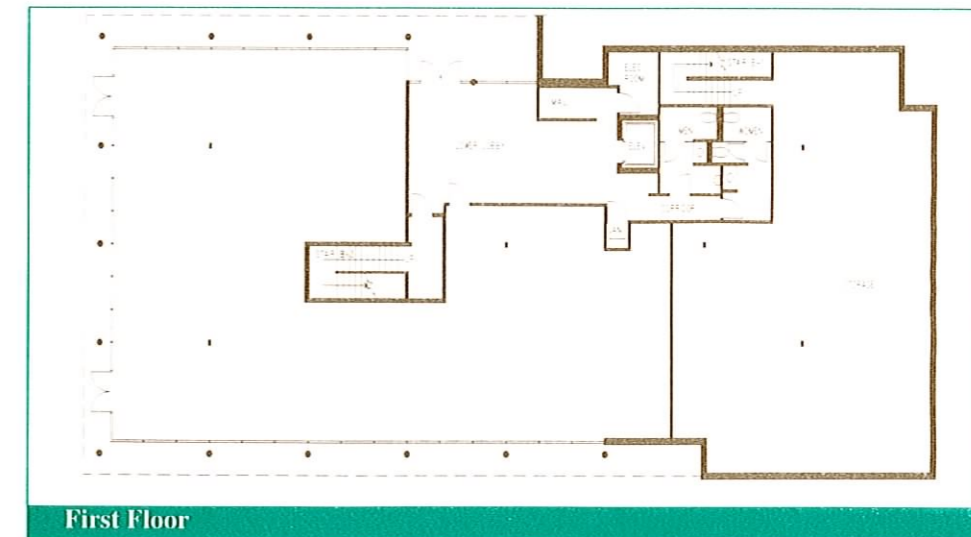
The floor plates shown on this brochure are of the three story 24,750 square foot building.

Building Details:

Location	2420 Martin Road Fairfield, California
Size	Two buildings totaling 35,250 square feet <i>Three-story - 24,750 square feet</i> <i>Two-story - 10,500 square feet</i>
Floor Plate	5,000 - 8,777 square feet
Parking	123 spaces 4 cars per 1,000 square feet
Developer/Owner	The Wiseman Company
Architect	Treffinger, Walz & MacLeod
Contractor	John F. Otto, Inc.



Second Floor



First Floor



707 ♦ 427 ♦ 1212